

DESCRIPTION

AMC MODEL SW-2187-1DU IS A REFLECTIVE SPST SWITCH/MODULATOR WITH INTEGRAL ECL DRIVER, DESIGNED TO MAINTAIN A VERY HIGH ISOLATION, LOW IN-BAND VIDEO TRANSIENT SIGNALS, AND ULTRA FAST SWITCHING RESPONSE TIME.

SPECIFICATIONS

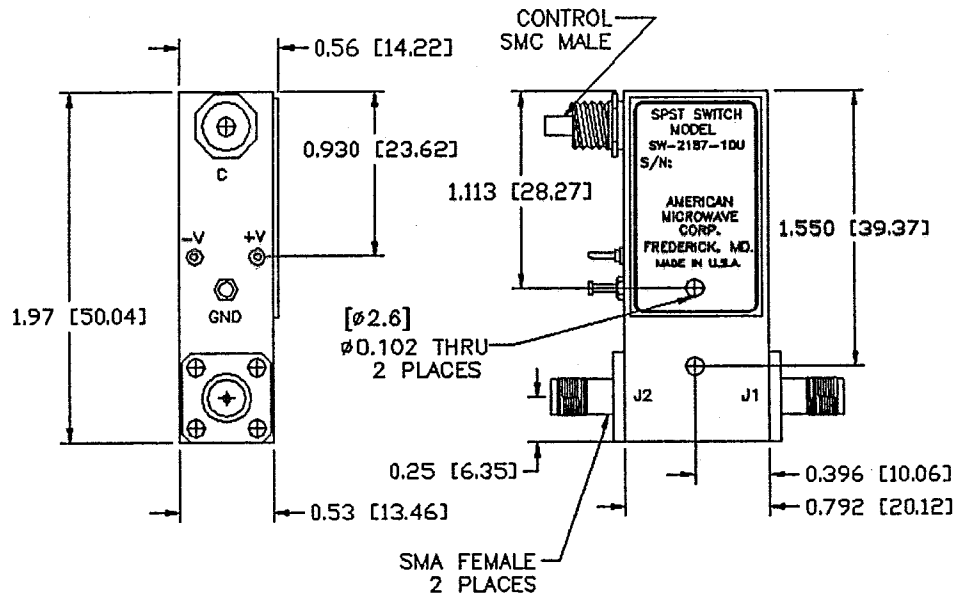
- FREQUENCY RANGE 2-18 GHz MINIMUM
- INSERTION LOSS 2-4 GHz, 2.5 dB MAXIMUM
4-8 GHz, 3.5 dB MAXIMUM
8-18 GHz, 4.5 dB MAXIMUM
- ISOLATION 100 dB MINIMUM
- VSWR (ON) 2-4 GHz, 1.8:1 MAXIMUM
4-8 GHz, 1.9:1 MAXIMUM
8-18 GHz, 2.0:1 MAXIMUM
- SWITCHING TIME
RISE (10% RF TO 90% RF) 1 nS MAXIMUM
FALL (90% RF TO 10% RF) 2 nS MAXIMUM
ON (50% TTL TO 90% RF) 9 nS MAXIMUM
OFF (50% TTL TO 10% RF) 20 nS MAXIMUM
- RF POWER RATINGS 100mW CW MAXIMUM
- CONTROL SINGLE ENDED ECL LOGIC
LOGIC "0" (-1.75V)= ISOLATION
LOGIC "1" (-0.9V)= INSERTION LOSS
- IN-BAND VIDEO POWER/TRANSIENTS ≤ -70 dBm @ 2 GHz TO 18 GHz, OR
50mV P-P IN 100 MHz BANDWIDTH
- POWER SUPPLY +5VDC ±5% @ 50 mA MAXIMUM
-5VDC ±5% @ 50 mA MAXIMUM
- CONNECTORS
RF INPUT/OUTPUT SMA (FEMALE)
POWER SOLDER PIN
CONTROL SMC (MALE)
- SIZE 0.792" x 1.97" x 0.56"

AVAILABLE OPTIONS

- A01 50Ω CONTROL IMPEDANCE
- A02 100Ω CONTROL IMPEDANCE
- A03 INVERSE CONTROL LOGIC (LOGIC "0" INSERTION LOSS)
- A09 BALANCED ECL LOGIC (SOLDER PINS)
- A10 ±9VDC TO ±18VDC SUPPLY POWER
- A14 J1 SMA MALE, J2 SMA FEMALE
- A15 TWO SMA MALE CONNECTORS
- A16 SOLDER PIN CONTROL TERMINAL
- A17 SMA FEMALE CONTROL TERMINAL
- A18 CANNON MULTIPIN MDM9SSP

REVISIONS				DATE	APPROVED
ZONE	REV.	DESCRIPTION			
	A	ORIGINAL RELEASE, NEW DEVELOPMENT		11/22/92	<i>M-2</i>

MECHANICAL OUTLINE



NOTES:

- 1) DIMENSIONS ARE IN INCHES [MILLIMETERS]
- 2) TOLERANCES: X.XX ±0.020
X.XXX ±0.010
- 3) WEIGHT: APPROX. 1.3 OZ

ENVIRONMENTAL RATINGS

- TEMPERATURE -55°C TO +95°C (OPERATING)
-65°C TO +125°C (STORAGE)
- HUMIDITY MIL-STD-202F, METHOD 103B COND. B
- SHOCK MIL-STD-202F, METHOD 213B COND. B
- VIBRATION MIL-STD-202F, METHOD 204D COND. B
- ALTITUDE MIL-STD-202F, METHOD 105C COND. B
- TEMPERATURE CYCLE MIL-STD-202F, METHOD 107D COND. A



AMERICAN MICROWAVE CORPORATION

7311G GROVE RD., FREDERICK, MD. 21701
TEL: (301) 662-4700 FAX: (301) 662-4938

APPROVALS	DATE
DRAWN <i>WSP</i>	11/22/92
CHECKED <i>WSP</i>	11/22/92

PRODUCT FEATURE SW-2187-1DU

2-18 GHz, REFLECTIVE, LOW VIDEO TRANSIENT, HIGH ISOLATION AND
ULTRA FAST SPST PULSE MODULATOR/SWITCH

SIZE A SHEET 1 OF 2 DWG. # 100-2857